

Nicholas A. Adams, Jr.  
 V.P., Statistics & Business Information  
 Tel: 1-703-358-2984  
 Fax: 1-703-358-2961  
 E-mail: [nadams@aluminum.org](mailto:nadams@aluminum.org)

Henry F. Sattlethight  
 Manager, Statistical Programs  
 Tel: 1-703-358-2985  
 Fax: 1-703-358-2961  
 E-mail: [hsattlethight@aluminum.org](mailto:hsattlethight@aluminum.org)

## Summary of Aluminum Producer Net Shipments<sup>1</sup> *Preliminary Estimates*

**November 2009**

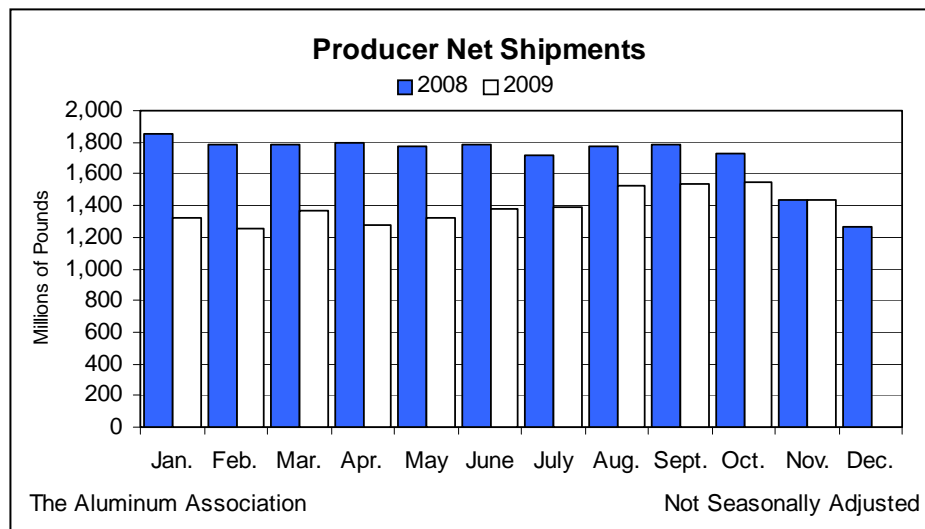
**Issued: December 18, 2009**

Aluminum net shipments (including exports) by domestic U.S. and Canadian facilities totaled an estimated 1,431 million pounds during November, a decline of 7.3 percent from October's revised total of 1,543 million pounds. Shipments of aluminum mill products decreased 9.3 percent from the previous month to 899 million pounds in November while shipments of aluminum ingot for castings, exports and destructive uses decreased 3.6 percent to a total of 532 million pounds. Compared to a year ago, shipments in November were off three-tenths of one percent. Through eleven months, producer shipments totaled an estimated 15,354 million pounds, 20.2 percent below the 2008 year-to-date total of 19,238 million. Inventories declined 2.5 percent from October to November, totaling an estimated 1,932 million pounds and were off 30.2 percent from a year ago.

Industry Net Shipments <sup>1</sup> <i>(Millions of Pounds)</i>	November		% Chge	Oct.		% Chge	Year-to-Date		% Chge
	2009*	2008	Nov/Nov	2009	Nov/Oct	2009*	2008	09/08	
Mill Products	899	918	-2.0	991	-9.3	10,342	12,776	-19.1	
Ingot	532	518	2.6	552	-3.3	5,012	6,462	-22.4	
Total Shipments	1,431	1,436	-0.4	1,543	-7.3	15,354	19,238	-20.2	
Producer Inventory <sup>2</sup>	1,932	2,076	-30.2	1,982	-2.5				

**Sample**

(1) U.S. and Canadian producer shipments, excluding imports and intra-industry shipments for further fabrication.  
 (2) Inventory levels reflect both U.S. and Canadian producers.  
 (\*) Figures are preliminary. Cumulative data include revisions to previous periods.



The Association estimates producer net shipments based on reports by its members of their shipments for the latest month. The Association expands these data to total industry utilizing expansion ratio that attempts to reflect the relationship of reporters to the total industry. While the Association believes that its statistical procedures and methods are reliable, it does not warrant the accuracy or completeness of the data. All data contained herein are subject to revision. *This report is available on the Aluminum Association website, [www.aluminum.org](http://www.aluminum.org)* © The Aluminum Association, Inc.

## ALUMINUM PRODUCER NET SHIPMENTS<sup>1</sup>

U.S. and Canada

### PRELIMINARY ESTIMATES – November 2009

Issued: December 18, 2009

<i>(Figures in Millions of Pounds)</i>	<u>November</u>		% Chge	Oct.	% Chge	<u>Year-to-Date</u>		% Chge
	<u>2009*</u>	<u>2008</u>	<u>Nov/Nov</u>	<u>2009</u>	<u>Nov/Oct</u>	<u>2009*</u>	<u>2008</u>	<u>09/08</u>
Sheet & Plate <sup>2</sup>	576.1	562.7	2.4	631.1	-8.7	6,519.0	7,674.6	-15.1
Foil <sup>2</sup>	71.8	77.1	-6.9	83.4	-14.0	889.6	1,092.8	-18.6
Extruded Products <sup>3</sup>	186.0	208.0	-10.6	199.3	-6.7	2,142.4	2,992.3	-28.4
Electrical Conductor	35.9	42.3	-15.2	47.3	-24.2	513.4	616.7	-16.8
Other <sup>4</sup>	29.4	27.4	7.2	30.0	-2.0	277.9	399.9	-30.5
Total Mill Products	899.2	917.5	-2.0	991.1	-9.3	10,342.2	12,776.4	-19.1
Ingot <sup>5</sup>	532.0	518.3	2.6	552.0	-3.6	5,012.2	6,461.6	-22.4
Total Shipments	1,431.2	1,435.8	-0.3	1,543.2	-7.3	15,354.5	19,238.0	-20.2
Producer Inventories <sup>6</sup>	1,931.7	2,766.1	-30.2	1,981.8	-2.5			
Ingot	634.2	906.2	-30.0	675.2	-6.1			
Scrap	315.6	531.9	-40.7	326.9	-3.5			
Other	981.9	328.0	299.3	979.7	0.2			
Integrated Inventories <sup>6</sup>	1,047.5	1,127.1	-8.1	1,121.9	-0.5			
Ingot	381.7	473.1	-23.5	421.4	-9.5			
Scrap	124.8	217.7	-42.7	131.7	-8.7			
Other	536.3	736.8	-27.2	559.8	-3.9			

Source: The Aluminum Association, Inc.

- Note: 1) Data presented on this report represent total U.S. and Canadian domestic producer shipments less intra-industry shipments for further fabrication and exclude imports.
- 2) Sheet & Foil – Gauge split changed from 0.006” to 0.0079” retroactive to January 2007. Figures for prior years are not comparable.
- 3) Extruded Products – extruded rod and bar; shapes and; pipe and tube
- 4) Other mill products – drawing stock; bare wire; forgings and impacts and; powder and paste.
- 5) Net ingot shipments for foundry castings, export and destructive uses.
- 6) End of month inventory levels reflect stocks held by U.S. and Canadian producers. Integrated producers include Alcan, Alcoa, Aluminerie Alouette, Columbia Falls, Hydro Aluminum, Novelis, Noranda, and Ormet.
- \*) Figures are preliminary. Cumulative data include revisions to previous periods.

Detail may not add to total due to rounding.

For additional Association statistics on producer shipments, [click here](#).

**ALUMINUM PRODUCER NET SHIPMENTS<sup>1</sup>**

U.S. and Canada

**PRELIMINARY ESTIMATES – 2009**

Issued: December 18, 2009

*(Figures in Millions of Pounds)*

	<u>Jan.</u>	<u>Feb.</u>	<u>Mar.</u>	<u>Apr.</u>	<u>May</u>	<u>June</u>	<u>July</u>	<u>Aug.</u>	<u>Sept.</u>	<u>Oct.</u>	<u>Nov.*</u>	<u>Dec.</u>	<u>Year *</u>
Sheet & Plate <sup>2</sup>	562	530	582	557	590	615	618	633	623	631	576		6,519
Foil <sup>2</sup>	77	68	76	84	82	83	91	89	84	83	72		890
Extruded Products <sup>3</sup>	188	177	186	180	187	213	205	211	210	199	186		2,142
Electrical Conductor	48	45	48	47	47	53	43	45	53	47	36		513
Other <sup>4</sup>	23	22	25	24	22	23	25	27	27	30	29		278
Total Mill Products	897	843	917	892	929	988	983	1,005	997	991	899		10,342
Ingot <sup>5</sup>	429	415	453	383	393	389	411	511	544	552	532		5,012
Total Shipments	1,326	1,258	1,370	1,275	1,323	1,376	1,394	1,516	1,541	1,543	1,431		15,354
Producer Inventories <sup>6</sup>	2,729	2,733	2,308	2,259	2,226	2,136	2,155	2,088	2,040	1,982	1,932		
Ingot	934	878	793	783	780	710	681	678	675	675	634		
Scrap	57	47	407	385	349	319	399	341	341	327	316		
Other	1,228	1,208	908	1,082	1,087	1,106	1,074	1,069	1,024	980	982		
Integrated Inventories <sup>6</sup>	1,526	1,449	1,285	1,296	1,285	1,203	1,212	1,173	1,157	1,122	1,048		
Ingot	627	583	598	524	532	473	466	445	447	427	387		
Scrap	220	209	192	193	168	166	179	169	150	137	125		
Other	679	657	495	579	585	564	567	559	560	558	536		

Source: The Aluminum Association, Inc.

- Note: 1) Data presented on this report represent total U.S. and Canadian producer shipments less intra-industry shipments for further fabrication.  
2) Sheet & Foil – Gauge split changed from 0.006” to 0.0079” retroactive to January 2007. Figures for prior years are not comparable.  
3) Extruded Products – extruded rod and bar; shapes and; pipe and tube  
4) Other mill products – drawing stock; bare wire; forgings and impacts and; powder and paste.  
5) Net ingot shipments for foundry castings, export and destructive uses.  
6) End of month inventory levels reflect stocks held by U.S. and Canadian producers. Integrated producers include Alcoa, Aluminerie Alouette, Columbia Falls, Hydro Aluminum, Novelis, Noranda, Ormet and Rio Tinto Alcan.  
\*) Figures are preliminary. Cumulative data include revisions to previous periods.

Detail may not add to total due to rounding.

**ALUMINUM PRODUCER NET SHIPMENTS<sup>1</sup>**

U.S. and Canada

**Year 2008**

Revised: July 23, 2009

*(Figures in Millions of Pounds)*

	<u>Jan.</u>	<u>Feb.</u>	<u>Mar.</u>	<u>Apr.</u>	<u>May</u>	<u>June</u>	<u>July</u>	<u>Aug.</u>	<u>Sept.</u>	<u>Oct.</u>	<u>Nov.</u>	<u>Dec.</u>	<u>Year</u>
Sheet & Plate <sup>2</sup>	744	670	710	715	722	714	738	704	711	685	563	546	8,221
Foil <sup>2</sup>	104	101	102	103	104	102	100	101	99	100	77	57	1,150
Extruded Products <sup>3</sup>	290	286	288	291	280	285	280	266	258	261	208	161	3,153
Electrical Conductor	53	47	58	56	55	62	60	58	64	60	42	50	666
Other <sup>4</sup>	39	38	38	41	39	41	35	32	34	35	27	25	425
Total Mill Products	1,231	1,142	1,196	1,205	1,200	1,204	1,213	1,160	1,166	1,141	918	839	13,616
Ingot <sup>5</sup>	627	648	592	592	578	583	508	616	616	589	518	426	6,888
Total Shipments	1,858	1,790	1,788	1,797	1,778	1,786	1,721	1,776	1,782	1,730	1,436	1,266	20,504
Producer Inventories <sup>6</sup>	3,080	2,854	2,889	2,877	2,895	2,902	2,876	2,905	2,813	2,797	2,766	2,679	
Ingot	1,035	1,020	1,013	1,013	1,017	1,017	981	1,020	919	906	896		
Scrap	90	43	443	431	442	422	530	530	542	533	532	535	
Other	1,555	1,761	1,433	1,433	1,436	1,463	1,364	1,355	1,345	1,327	1,328	1,248	
Integrated Inventories <sup>6</sup>	1,797	1,709	1,663	1,644	1,654	1,595	1,629	1,658	1,571	1,550	1,528	1,454	
Ingot	665	673	661	651	662	623	634	660	583	581	573	567	
Scrap	213	191	200	193	192	199	226	218	217	227	218	217	
Other	919	844	803	800	801	773	770	780	771	742	737	670	

Source: The Aluminum Association, Inc.

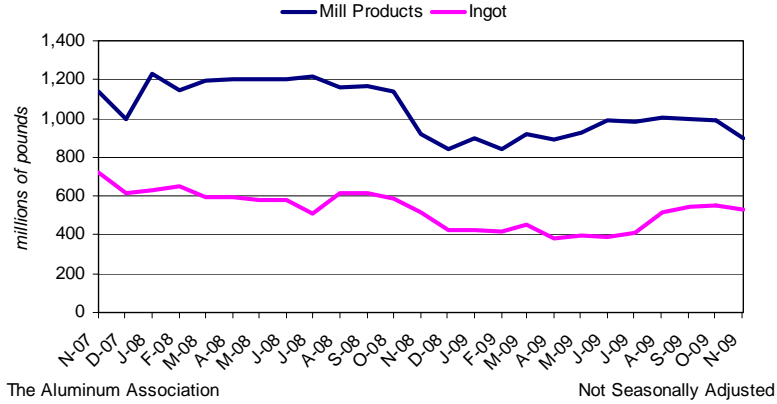
- Note: 1) Data presented on this report represent total U.S. and Canadian producer shipments less intra-industry shipments for further fabrication.  
2) Sheet & Foil – Gauge split changed from 0.006” to 0.0079” retroactive to January 2007. Figures for prior years are not comparable.  
3) Extruded Products – extruded rod and bar; shapes and; pipe and tube  
4) Other mill products – drawing stock; bare wire; forgings and impacts and; powder and paste.  
5) Net ingot shipments for foundry castings, export and destructive uses.  
6) End of month inventory levels reflect stocks held by U.S. and Canadian producers. Integrated producers include Alcoa, Aluminerie Alouette, Columbia Falls, Hydro Aluminum, Novelis, Noranda, Ormet and Rio Tinto Alcan,  
\*) Figures are preliminary. Cumulative data include revisions to previous periods.

Detail may not add to total due to rounding.

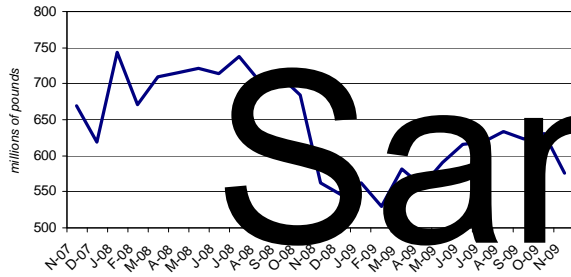
# PRODUCER SHIPMENTS & INVENTORY LEVELS

U.S. and Canada – November 2007 – November 2009

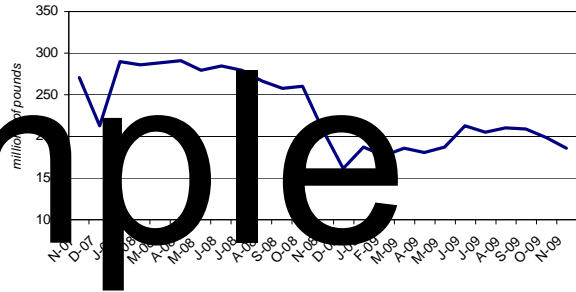
## Producer Shipments - Ingot and Mill Products



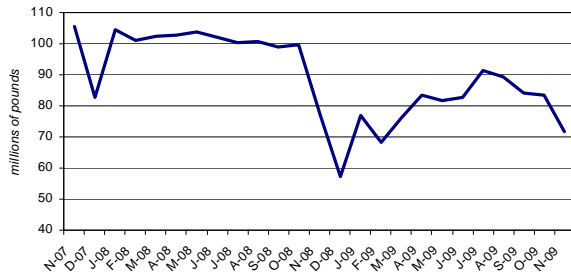
## Sheet & Plate



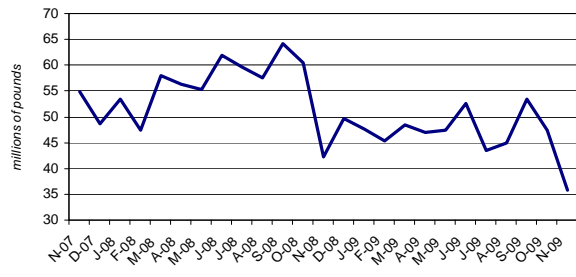
## Extruded Products



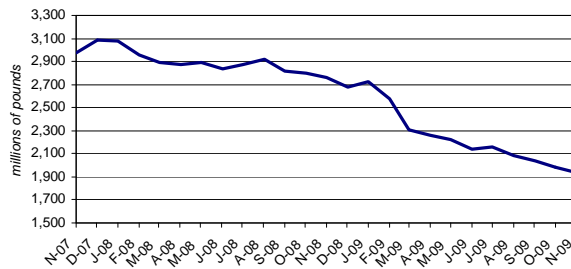
## Foil



## Electrical Conductor



## Producer Inventory Levels



[The Aluminum Association](#), based in Arlington, Virginia, represents U.S. and foreign-based primary producers of aluminum, as well as recyclers, and producers of semi-fabricated products, and suppliers. Member companies operate over 200 plants in North America and many conduct business worldwide.

## **Statistical Reports and Publications**

The Aluminum Association's statistical programs provide industry information on primary aluminum production, new orders of mill products, industry shipments, end use market estimates, inventories, recycling and foreign trade on a monthly, quarterly and annual basis. Special surveys provide data on specific subjects such as primary capacity, flat roll capacity, safety, inventories and castings shipments. The Association's foreign trade reports are based on government customs data.

### **Industry Overview**

Aluminum Statistical Review (Annual Fact Book)  
Aluminum Highlights (Weekly)  
Aluminum Situation (Monthly)  
Summary of Producer Shipments and Inventories (Monthly)

### **Primary Aluminum**

Primary Aluminum Production (Monthly)  
Primary Installed Capacity (Annual)  
Shipments of Primary Aluminum by Form (Quarterly)

### **Mill Products**

Index of Net New Order Receipts for Aluminum Mill Products (Monthly)  
Can Stock Shipments (Monthly)  
Electrical Conductor Shipments (Monthly)  
Extruded Products Shipments and Press Utilization (Monthly)  
Flat Roll Capacity (Annual)  
Foil Shipments (Monthly)  
Forging and Impacts Shipments (Monthly)  
Rod, Bar, and Wire Shipments (Monthly)  
Sheet and Plate Shipments (Monthly)

### **End Use**

Extrusion Shipments by End Use (Quarterly)  
Fin Stock Shipments by End Use (Quarterly)  
Foil Shipments by End Use (Quarterly)  
Sheet and Plate Shipments by End Use (Quarterly)

### **Castings**

U.S. Foundry Castings Shipments (Annual)  
Canada Foundry Castings Shipments (Annual)

### **Recycling**

New Can Stock (Class) Scrap Receipts (Monthly)  
Used Beverage Can Reclamation (Monthly)

### **Foreign Trade**

Summary of U.S. Imports and Exports (by Commodity), Monthly – U.S. and Canada  
Foreign Trade Online Database - U.S., Canada and China Exports & Imports of Aluminum (By Commodity, by Country)

For a complete list of statistical publications and reports visit our bookstore at [www.aluminum.org/bookstore](http://www.aluminum.org/bookstore)

## **Copyright and License Agreement Notice**

This Licensed Product is subject to copyright and to the terms of the License Agreement between Customer and The Aluminum Association. Licensed Product is provided for Customer's internal use only and may not be copied or redistributed for any purpose without prior written permission from AA. Re-use, reproduction, or distribution for commercial purposes is strictly prohibited. Unless authorized by AA in writing, any routine or systematic distribution of any portion of the Licensed Product to unauthorized users is strictly prohibited.

MATERIALS AVAILABLE ARE PROVIDED "AS IS" WITHOUT WARRANTY OF ANY KIND, EXPRESS OR IMPLIED, AND ALL SUCH WARRANTIES ARE HEREBY DISCLAIMED.

Any reproduction approved by The Aluminum Association must contain notice of The Aluminum Association's copyright in the Licensed Product as follows:

**© 2009, The Aluminum Association. All Rights Reserved.**

# Sample